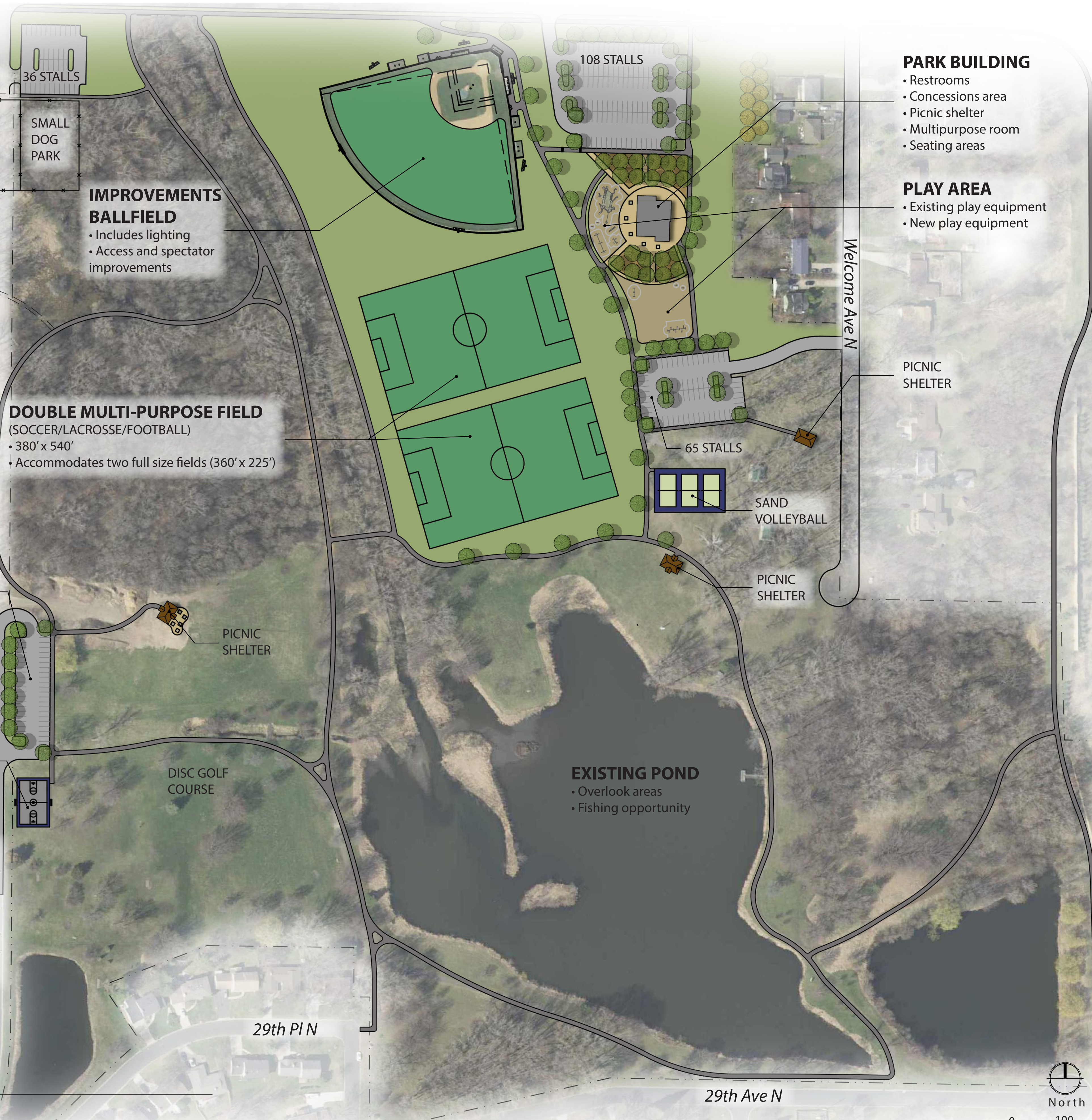


# DRAFT



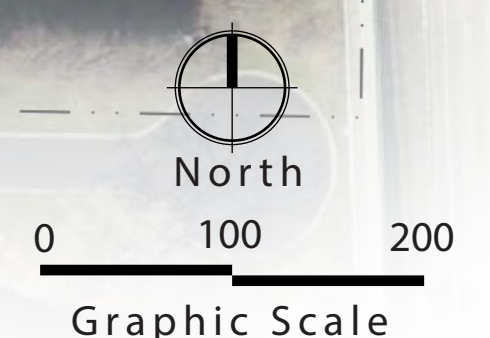
- PARK BUILDING**
- Restrooms
  - Concessions area
  - Picnic shelter
  - Multipurpose room
  - Seating areas

- PLAY AREA**
- Existing play equipment
  - New play equipment

- IMPROVEMENTS BALLFIELD**
- Includes lighting
  - Access and spectator improvements

- DOUBLE MULTI-PURPOSE FIELD**  
(SOCCER/LACROSSE/FOOTBALL)
- 380' x 540'
  - Accommodates two full size fields (360' x 225')

- EXISTING POND**
- Overlook areas
  - Fishing opportunity



# Draft Concepts

